



**COMMUNITY  
FOUNDATION**  
BOULDER COUNTY

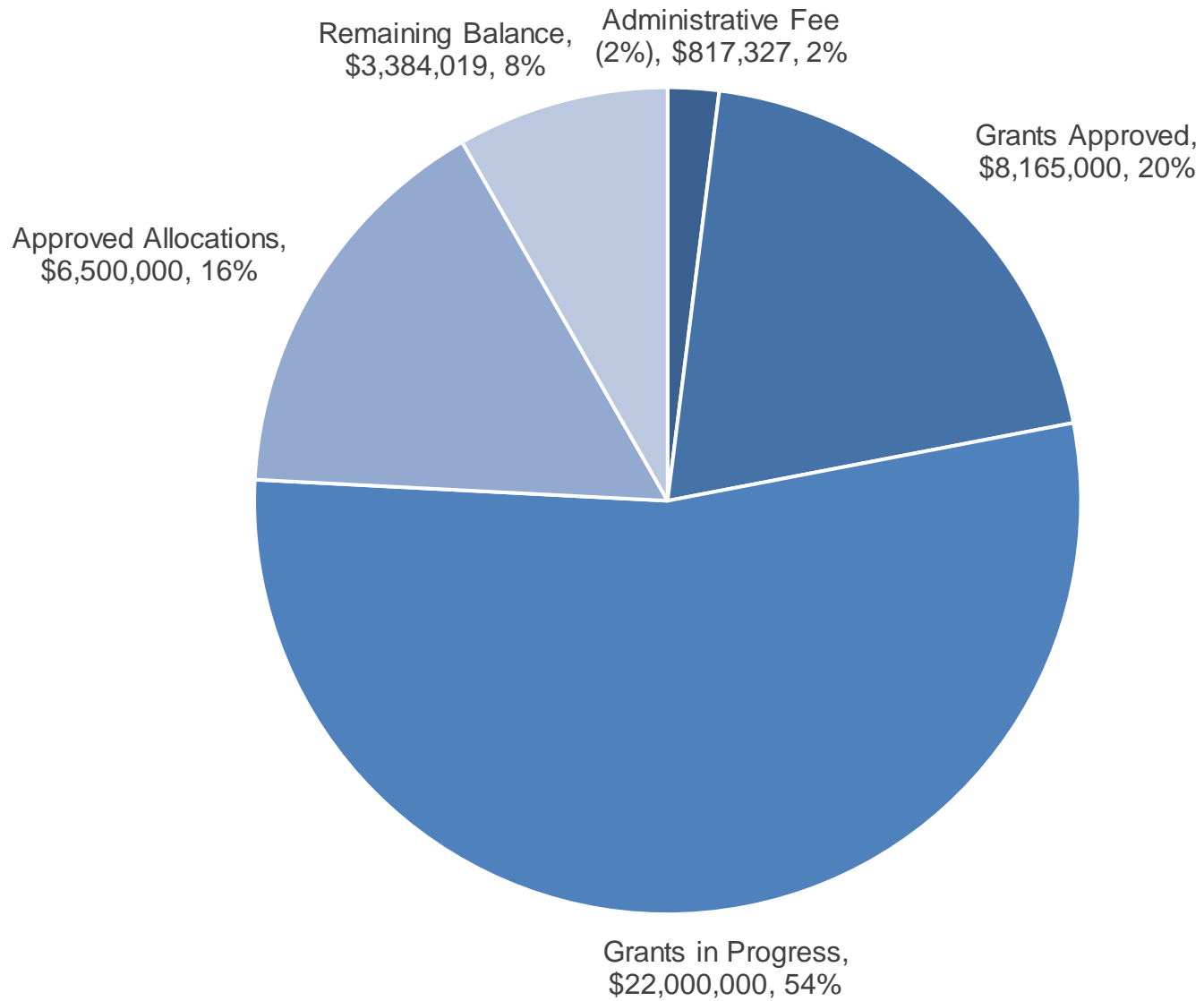
# Today's Agenda

- General update on the Wildfire Fund
- Recovery navigators
- Criteria for financial support (2.5 & 20 million) including how and when to access it
- Additional funding sources that will or may become available soon

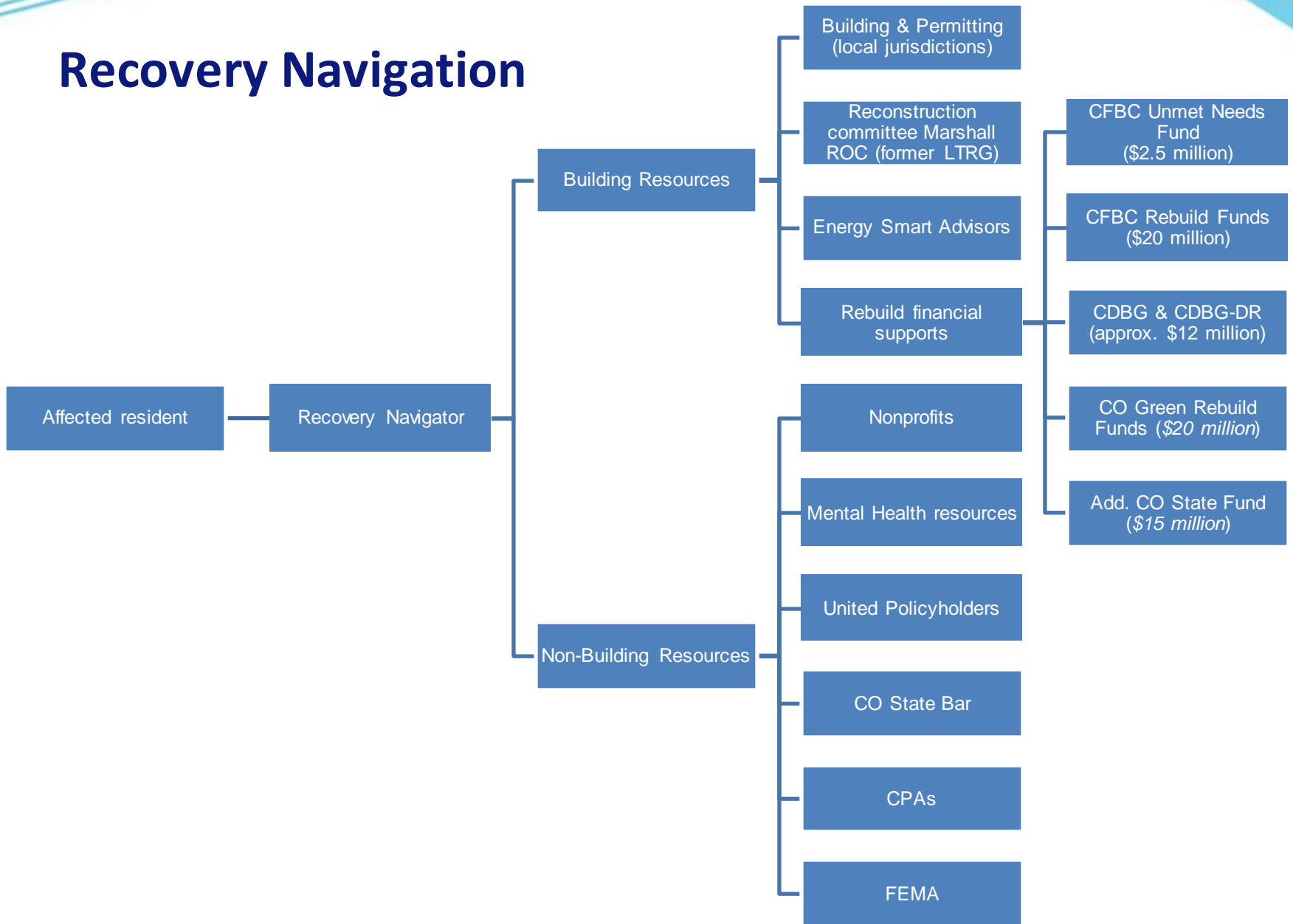
# We Fill Gaps In Support

The Wildfire Fund is prioritizing **rebuilding** and the **needs of the most vulnerable survivors** of the Marshall Fire. It is important we provide **wrap-around services** such as mental health supports and recovery navigation to simplify and ease the experience for survivors.

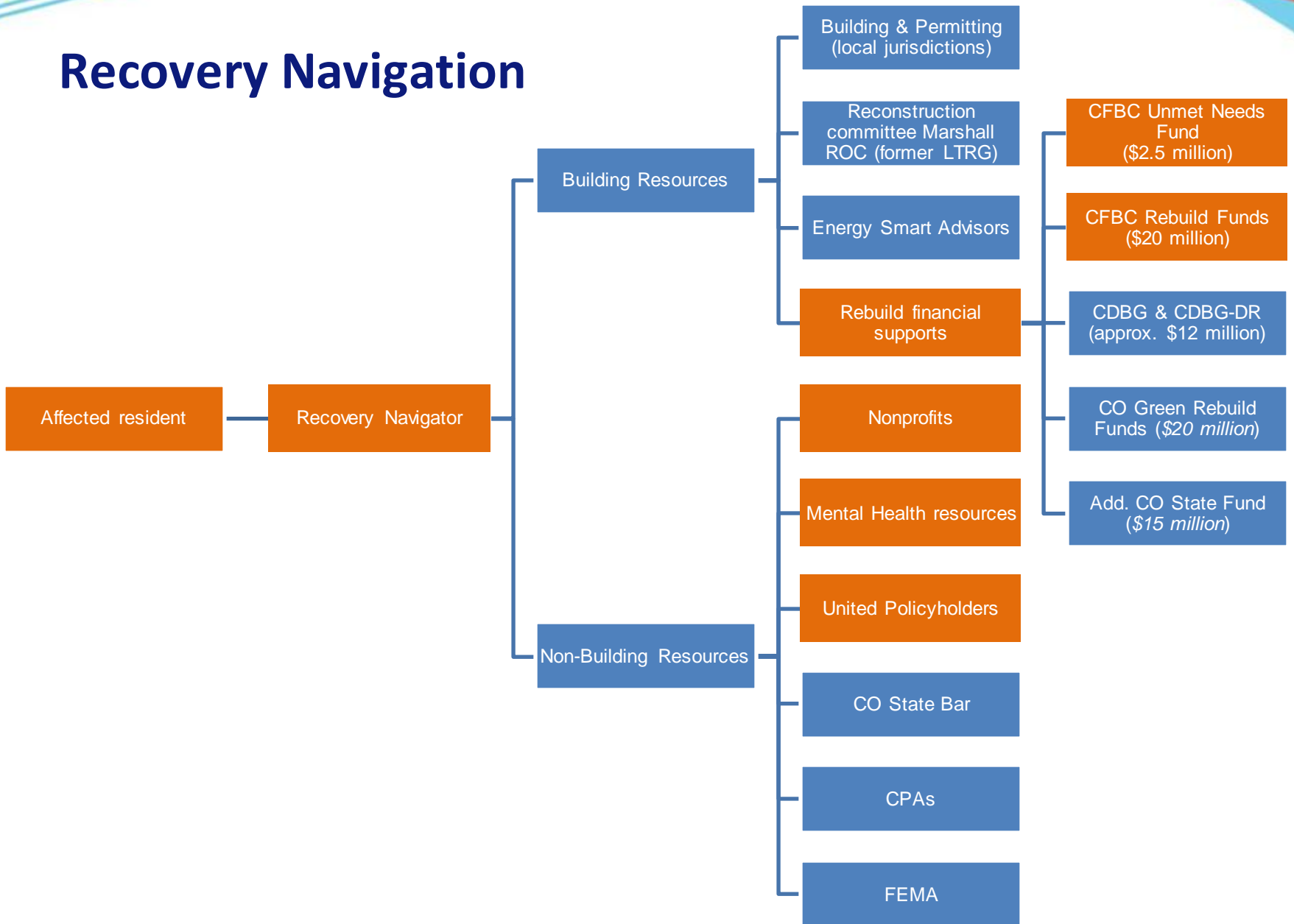
# Wildfire Fund



# Recovery Navigation



# Recovery Navigation



# \$2.5 Million For Unmet Needs

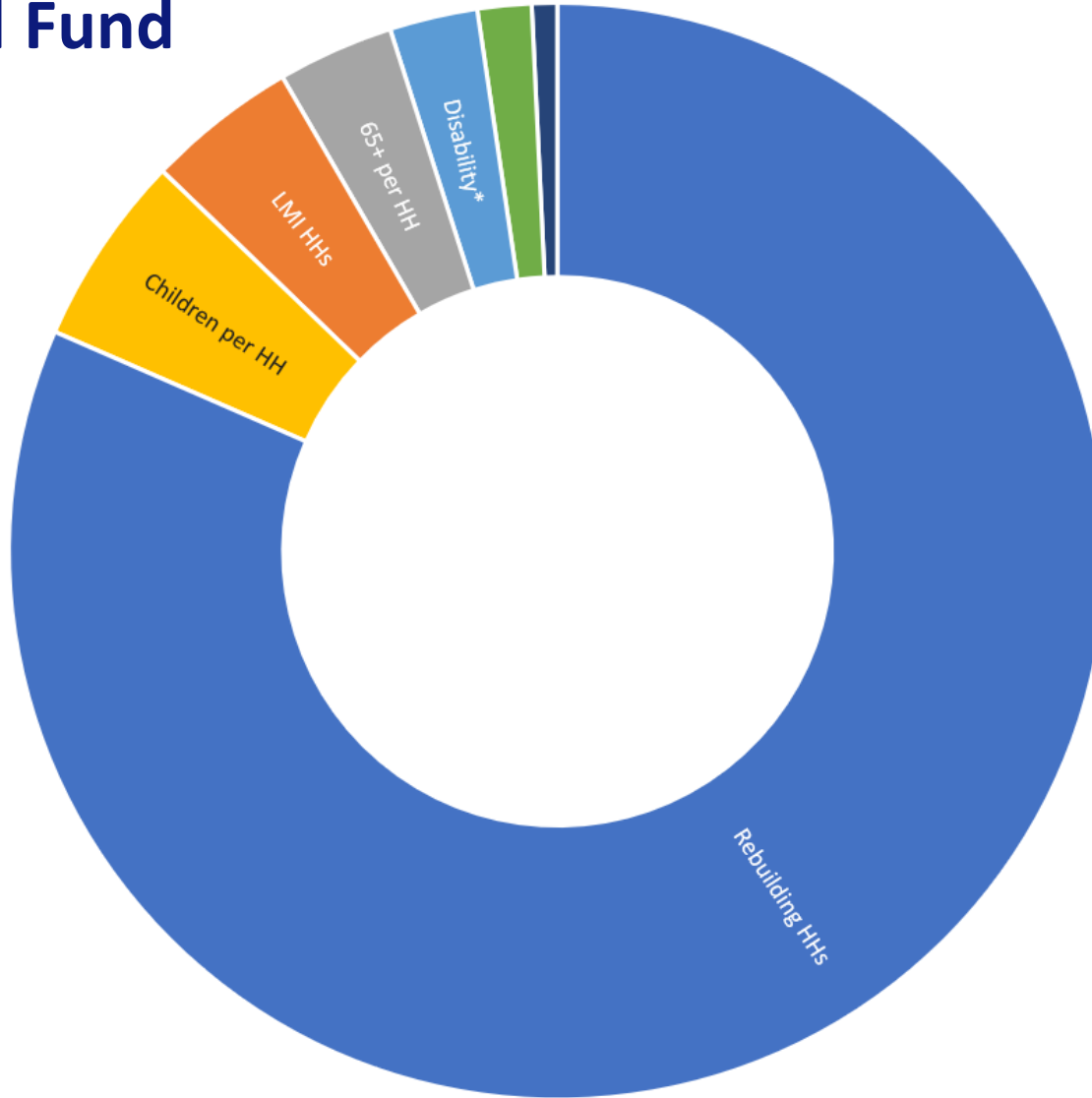
## Unmet needs may include:

- Rent or mortgage assistance
- Eviction prevention assistance
- Childcare
- Child support
- Communications and Technology (computers, internet, mobile phone)
- Transportation (auto payment, insurance, non-cosmetic repairs)
- Medical bills
- Utility bills (electric/gas)
- Renter's insurance
- Homeowner's insurance
- HOA fees
- Legal services (non-criminal, eviction, foreclosure, family)
- Cremation, burial, and funeral services
- Car repair
- Mental or behavioral health needs
- Appliances and furniture
- Tools of trade
- Vehicles

**Applicants will work with recovery navigators to assess need and additional funding options before accessing CFBC funds.**

# \$20 Million Rebuild Fund

Portion of total amount





# Rebuild Fund

|   | # Estimated | Amount    | Total         |
|---|-------------|-----------|---------------|
| Rebuilding HHs                              | 813         | \$ 20,000 | \$ 16,260,000 |
| LMI HHs                                     | 88.5        | \$ 10,000 | \$ 885,000    |
| 65+ per HH                                  | 455.25      | \$ 1,500  | \$ 682,875    |
| Children per HH                             | 750         | \$ 1,500  | \$ 1,125,000  |
| Disability                                  | 172.5       | \$ 3,000  | \$ 517,500    |
| Single HOH                                  | 105.75      | \$ 3,000  | \$ 317,250    |
| Discretionary                               | 100         | \$ 1,500  | \$ 150,000    |
|   |             |           | \$ 19,937,625 |
| Family of 4                                 |             | \$ 23,000 |               |
| Single HOH w/ LMI and 2 kids                |             | \$ 36,000 |               |
| Two older adults                            |             | \$ 23,000 |               |
| Mixed Generation HH (2 grandparents/2 kids) |             | \$ 26,000 |               |
| Notes:                                      |             |           |               |
| Total Households Impacted                   |             |           | 1084          |
| Rebuild Assumption                          |             |           | 75%           |

# Available Support

## Immediate basic needs

(housing, food, transportation, financial assistance)

- Contact Sister Carmen Community Center  
[marshallsupport@sistercarmen.org](mailto:marshallsupport@sistercarmen.org) or (303) 665-4342

## Mental health supports – [jewishfamilyservice.org/bcc](http://jewishfamilyservice.org/bcc)

- Boulder Jewish Family Service Boulder County Crisis Counseling Program, a partnership between our two organizations.
- Individual, couple, family and group sessions are available

## Insurance Navigation with United Policyholders – [uphelp.org](http://uphelp.org)

# CDBG & CDBG-DR

## Community Development Block Grants

- Supports community development activities to build stronger and more resilient communities.

## Community Development Block Grants – Disaster Recovery

- funds to help cities, counties, and states to recover from Presidentially declared disasters.

# One Door to Recovery Navigation

We collaborated with local and state partners to create a simple, centralized, and a human centered solution to support our community in our recovery.

# Public / Private Partnership

This innovative model will help Boulder County, the state, and the field respond better to the unfortunate inevitability of future disasters.



**What does this mean  
in terms of timing?**

# Q&A



**COMMUNITY  
FOUNDATION**  
BOULDER COUNTY