



**COMMUNITY  
FOUNDATION**  
BOULDER COUNTY

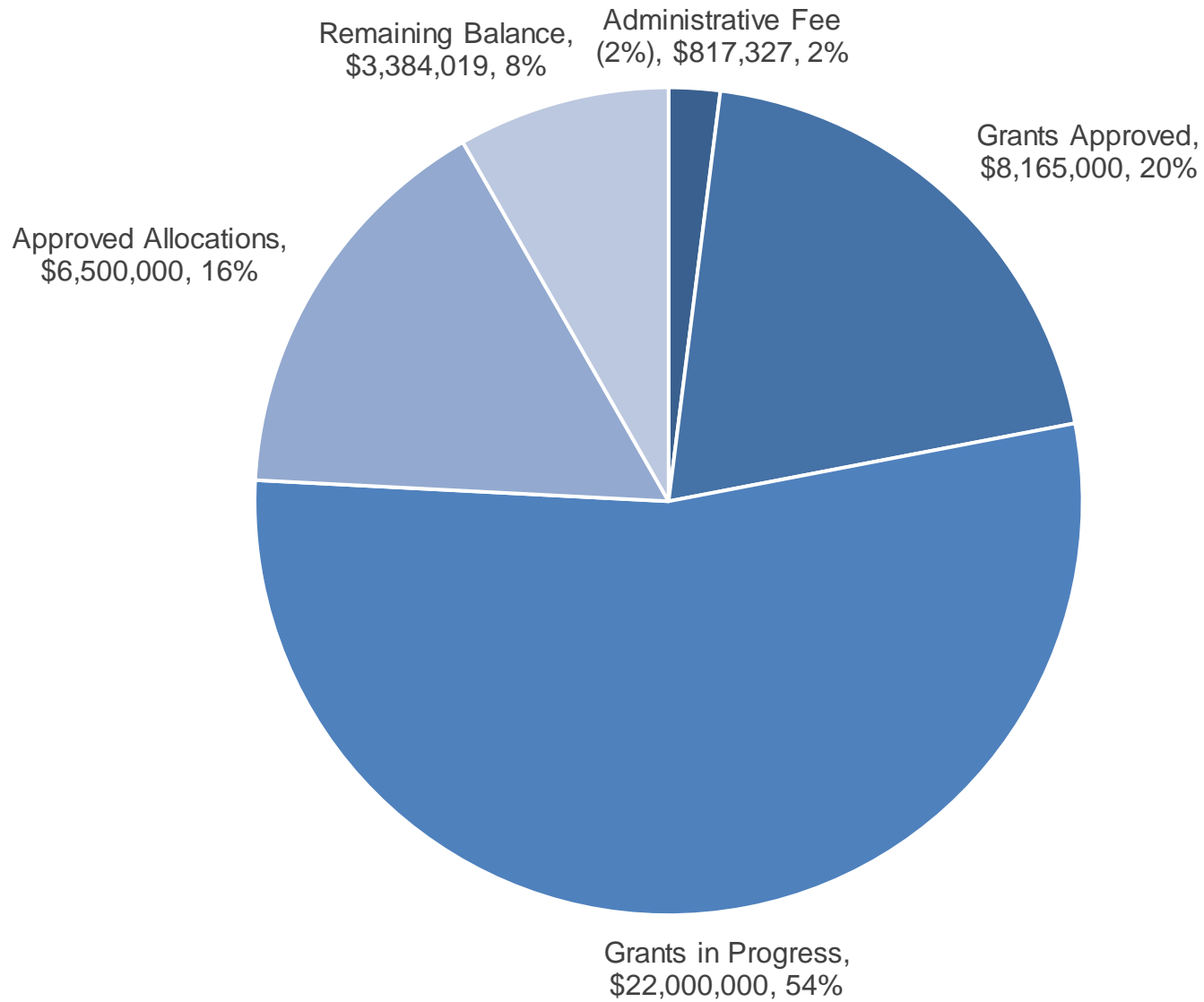
# Today's Agenda

- General update on the Wildfire Fund
- Recovery navigators
- Criteria for financial support (2.5 & 20 million) including how and when to access it
- Additional funding sources that will or may become available soon

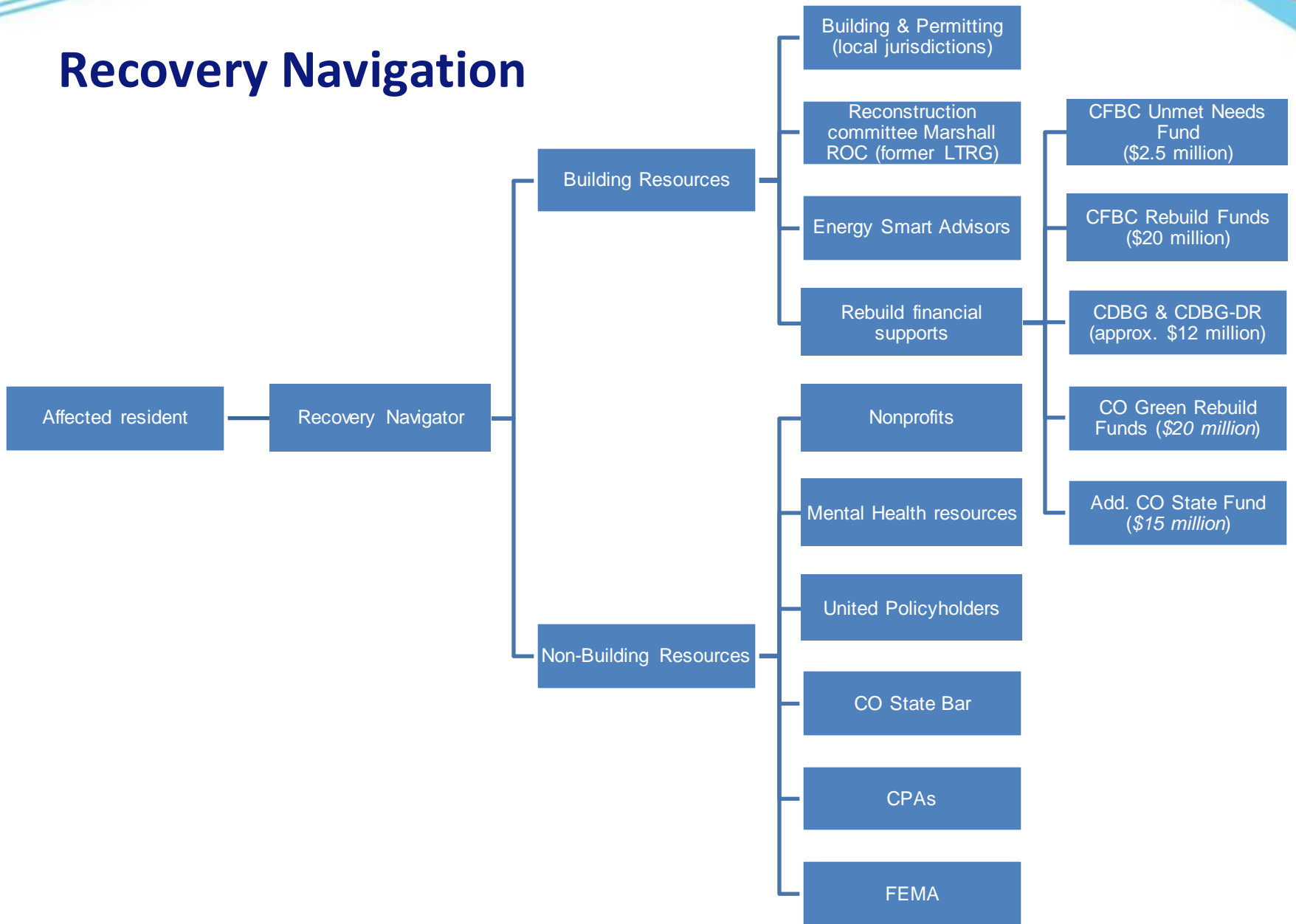
# We Fill Gaps In Support

The Wildfire Fund is prioritizing **rebuilding** and the **needs of the most vulnerable survivors** of the Marshall Fire. It is important we provide **wrap-around services** such as mental health supports and recovery navigation to simplify and ease the experience for survivors.

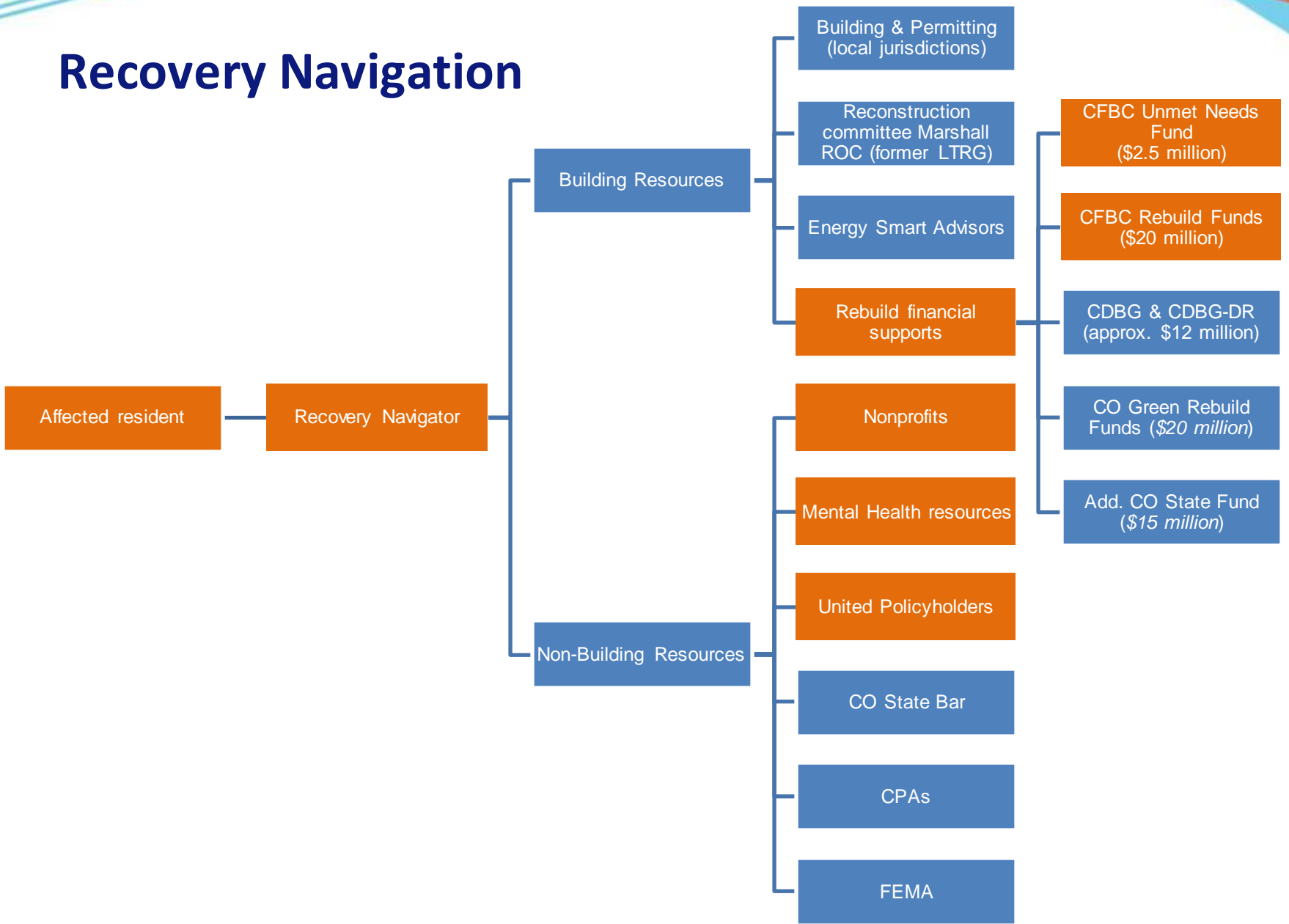
# Wildfire Fund



# Recovery Navigation



# Recovery Navigation



# \$2.5 Million For Unmet Needs

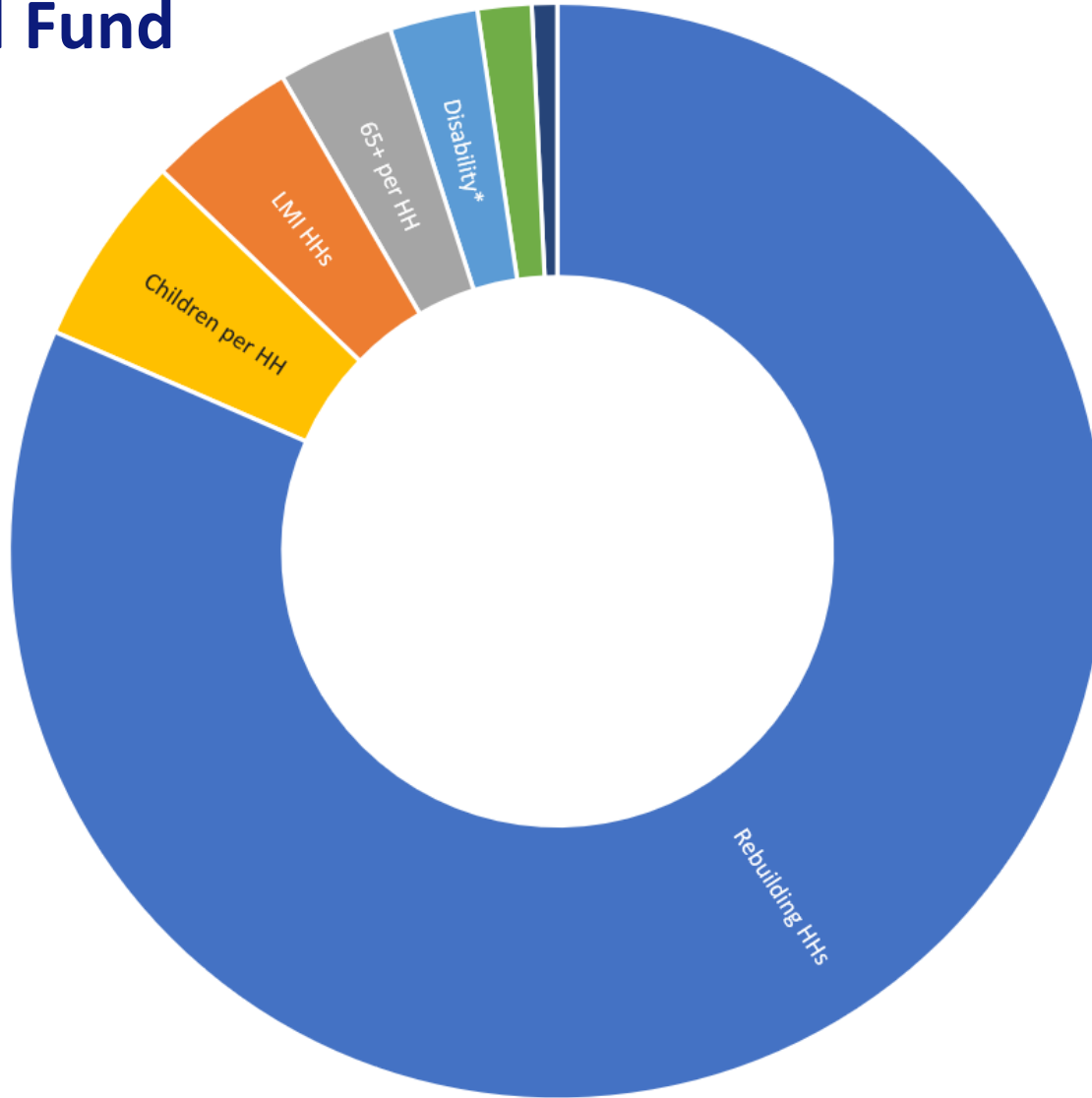
## Unmet needs may include:

- Rent or mortgage assistance
- Eviction prevention assistance
- Childcare
- Child support
- Communications and Technology (computers, internet, mobile phone)
- Transportation (auto payment, insurance, non-cosmetic repairs)
- Medical bills
- Utility bills (electric/gas)
- Renter's insurance
- Homeowner's insurance
- HOA fees
- Legal services (non-criminal, eviction, foreclosure, family)
- Cremation, burial, and funeral services
- Car repair
- Mental or behavioral health needs
- Appliances and furniture
- Tools of trade
- Vehicles

**Applicants will work with recovery navigators to assess need and additional funding options before accessing CFBC funds.**

# \$20 Million Rebuild Fund

Portion of total amount





# Rebuild Fund

	# Estimated	Amount	Total
Rebuilding HHs	813	\$ 20,000	\$ 16,260,000
LMI HHs	88.5	\$ 10,000	\$ 885,000
65+ per HH	455.25	\$ 1,500	\$ 682,875
Children per HH	750	\$ 1,500	\$ 1,125,000
Disability	172.5	\$ 3,000	\$ 517,500
Single HOH	105.75	\$ 3,000	\$ 317,250
Discretionary	100	\$ 1,500	\$ 150,000
			\$ 19,937,625
Family of 4		\$ 23,000	
Single HOH w/ LMI and 2 kids		\$ 36,000	
Two older adults		\$ 23,000	
Mixed Generation HH (2 grandparents/2 kids)		\$ 26,000	
Notes:			
Total Households Impacted			1084
Rebuild Assumption			75%

# Available Support

## Immediate basic needs

(housing, food, transportation, financial assistance)

- Contact Sister Carmen Community Center  
[info@sistercarmen.org](mailto:info@sistercarmen.org) or (303) 665-4342

## Mental health supports – [jewishfamilyservice.org/bcc](http://jewishfamilyservice.org/bcc)

- Boulder Jewish Family Service Boulder County Crisis Counseling Program, a partnership between our two organizations.
- Individual, couple, family and group sessions are available

## Insurance Navigation with United Policyholders – [uphelp.org](http://uphelp.org)

# CDBG & CDBG-DR

## Community Development Block Grants

- Supports community development activities to build stronger and more resilient communities.

## Community Development Block Grants – Disaster Recovery

- funds to help cities, counties, and states to recover from Presidentially declared disasters.

# One Door to Recovery Navigation

We collaborated with local and state partners to create a simple, centralized, and a human centered solution to support our community in our recovery.

# Public / Private Partnership

This innovative model will help Boulder County, the state, and the field respond better to the unfortunate inevitability of future disasters.



**What does this mean  
in terms of timing?**

# Q&A



**COMMUNITY  
FOUNDATION**  
BOULDER COUNTY